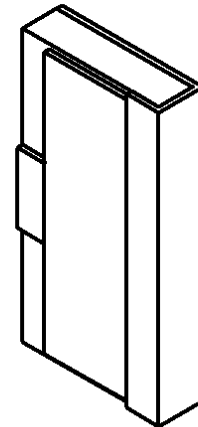
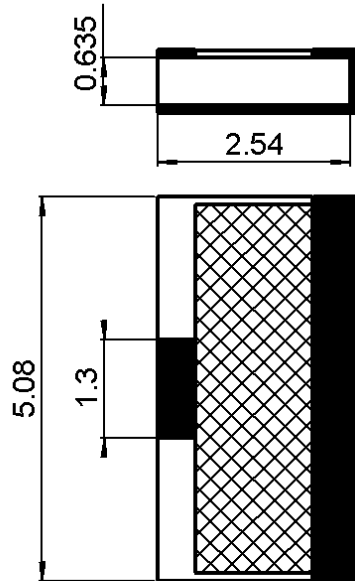


**SMT TERMINATION (ALN)**

**DC - 18 GHZ 10 W**

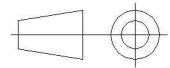
**R401.220.105**

Series :  
**TERMINATION**



Packaged in a bag of 100 pieces

dimensions are in mm.



**Issue : A**

In the effort to improve our products, we reserve the right to make changes judged to be necessary.

**SMT TERMINATION (ALN)**

**DC - 18 GHZ 10 W**

**R401.220.105**

Series :  
**TERMINATION**

**ELECTRICAL CHARACTERISTICS**

Frequency range : DC – 18 GHz  
 Impedance : 50 ohms ±5%  
 Average Power : 10 W

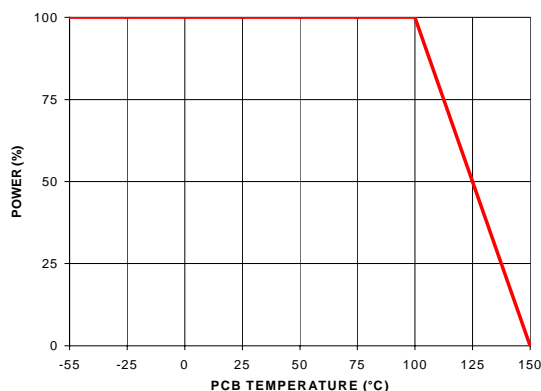
Frequency	DC – 8 GHz	8 – 12.4 GHz	12.4 – 18 GHz		
V.S.W.R	<= 1.10	<= 1.20	<= 1.35		

**MECHANICAL CHARACTERISTICS**

Substrate : AlN  
 Resistive film : Thick film  
 Protection film : Epoxy  
 Contacts : PtAg

**OTHER CHARACTERISTICS**

Power derating  
 Versus temperature



**ENVIRONMENTAL**

Operating temperature range : -55°C + 150°C

Issue : A

In the effort to improve our products, we reserve the right to make changes judged to be necessary.

